



Sir Christopher Hatton Academy

Sixth Form Prospectus

2026 - 2028



Sir Christopher Hatton Academy
Sixth Form

“The sixth-form provision is exceptional. Students enjoy the challenges offered by a demanding curriculum. Their positive attitudes and commitment to learning underpin their high achievements.”

- Ofsted 2022





Welcome

Welcome to Sir Christopher Hatton Sixth Form. We are exceptionally proud to be recognised as Ofsted Outstanding (2022) and all the opportunities that are on offer to our students.

This prospectus will guide you through the process of applying to study form from; academic courses, pastoral support, a day in the life as a sixth form student, extra-curricular opportunities to future prospects.

Table of Contents

»» Welcome and Key Information	—————→	Page 03
»» Student Perspective	—————→	Page 09
»» Application Timeline	—————→	Page 10
»» Course Information and Entry Requirements	—————→	Page 11
»» Subject Information	—————→	Page 13



Welcome

A Message from our Co-Principals

Thank you for considering Sir Christopher Hatton Academy Sixth Form. At Hatton we believe in 'Excellence for all', we work hard with all our students to enable them to achieve their full potential. In return we expect dedication and commitment throughout their time in Sixth Form.

Our Sixth Form is a thriving, vibrant, welcoming and inclusive place of learning where students are allowed to develop and become the best version of themselves.

We are very proud of our Sixth Form students and invest significantly to give them the most robust academic experience possible. Our dedicated Sixth Form team and teachers provide thorough academic and pastoral support and because we are acutely aware that aspirations of every student is different, our tutoring and pastoral systems ensure that individual needs are fully met.

We look forward to welcoming you to our fantastic Sixth Form in September 2026 and wish you all the very best of luck with your GCSE examinations this coming summer.



**Mr Alastair Mitchell & Mr Nicholas Salisbury
Co-Principals**

The Sixth Form Team

The Sixth form team are all here to support you in your application and throughout your time at Sir Christopher Hatton Sixth Form. We are all based in the Sixth Form Block and are happy to answer any questions you may have.



Mrs A Williams

Director of Sixth Form

Teacher of Sociology & RE

williamsa@hattonacademy.org.uk



Miss L Hughes

Head of Year 12

Teacher of Health & Social Care

hughesl@hattonacademy.org.uk



Mrs J Scobie

Head of Year 13

Teacher of MFL

scobiej@hattonacademy.org.uk



Mrs B Dutt

UCAS Co-ordinator

Teacher of Maths and Further Maths

duttb@hattonacademy.org.uk



Mr L Shackleton

Vice Principal: DSL

Teacher of Geography

shackletonl@hattonacademy.org.uk

Our Facilities



The Sixth Form Hub has excellent facilities exclusive to Sixth Form students including a number of quiet study rooms, a classroom, computer suites, group working room, indoor and outdoor social areas and a resource room. The Sixth Form Hub is located on the main academy site and gives the Sixth Form Students a sense of independence from lower school whilst remaining a communal hub complete with all the resources required.

The café in the Breezehill Centre provides an excellent space for students to study collaboratively. Students also often enjoy the Sixth Form only parts of the menu at the café

Our Outcomes

We are extremely proud of all of our students and their achievements. We are also delighted that this years cohort of Year 13s left the academy with some outstanding grades. For the fifth successive year, our results in all areas were significantly above the local and national average

	SCHA 2025	Regional 2023/4
Average Grade (Academic)	B	C
Average Grade (Vocational)	Distinction	Merit
A*/A Grades	33%	23.8%
A*-C Grades	86%	73.6%
Average Point Score (Academic)	38.46	32.15
Average Point Score (Vocational)	34.74	29.79

Sixth Form - Your Future

Year 12

Students are required to choose four subjects at Sir Christopher Hatton Academy, we believe that this provides students with the best possible opportunities to reach their potential. This allows student's flexibility and time to flourish before making the most informed decision as to which subjects they wish to continue into Year 13. In addition to their chosen subjects, many students complete the 'Extended Project Qualification' (EPQ) which is a degree level project of their choosing which counts as an AS- Level.

Post-19 Preparation

To support students in making future choices students have opportunities to speak to people from different industries during their time in Sixth Form. We welcome guest speakers from a range of universities, employers and training providers to give students an idea of the range of different career pathways open to them.

For the majority of our students, who wish to progress to University, we have a dedicated UCAS Lead who will support students with their applications. This should be assisted by the form tutors and the wider Sixth Form team. It is this support and guidance that enables the vast majority of students to gain places at high ranking universities on their chosen courses. Dedicated sessions and guidance documentation help them complete their UCAS applications.

If students do not wish to apply to university and instead opt for an apprenticeship or career pathway the school provides a tailored apprenticeship programme to give students a head start in writing their curriculum vitae, applying for employment or apprenticeships and preparing for interviews.



“High-quality careers provision helps pupils make informed decisions about their next steps.” - Ofsted 2022

“Students are very well prepared to take their next steps into adulthood.” - Ofsted 2022

Personal Development

Care, Guidance, & Support

Our priority is to treat our students as individuals and the thriving young adults that they are. The transition between Key Stage 4 and Key Stage 5 is challenging for all students, however, there is lots of support readily available:

- Each student will receive support and guidance from an experienced sixth form tutor.
- Form tutors are available to support with any pastoral or academic issues.
- The Heads of Year and the sixth form team have an open door policy for any student who needs support of any kind.

“Pupils enjoy an extensive range of sporting, creative and cultural experiences. They have a comprehensive appreciation of diversity and inclusion. Pupils took part in a colour run for Pride. Boys spoke about their feelings as part of the ‘Smile’ project.” - **Ofsted 2022**

Pastoral Curriculum

Our personal development initiative; the Hatton Alumni, coupled with the many leadership opportunities offered to our students encourages students to take ownership of their own personal development and enhance their character qualities. We strongly believe that when our students leave us at the end of Year 13 that they should be confident young adults who have the ability to make good choices in the wider world. We support student with this through our pastoral curriculum which includes PSHEE (Personal, Social, Health and Economic Education) and RSHE (Relationships, Sex and Health Education).

We offer students many other opportunities to enhance their personal development, these include but are not exclusive to:

- Week's work experience
- Yearly age relevant careers day
- Virtual work experience
- The NCS
- Talks from apprenticeship providers
- Social trips
- Curriculum trips
- UCAS support
- Various leadership opportunities



Extra - Curricular

Communities

Our committees are designed for, and run, by our students for the students. The committees are designed to increase the opportunities available to anyone studying in the Sixth Form. All our committees are open to everyone who wishes to get involved; a perfect way to meet other students and build vital interpersonal and leadership skills.

Societies

A society is a small group of students who meet to discuss common interests and passions. Run exclusively by Sixth Form students independently of teachers, societies are a great opportunity to expand existing interests, broaden horizons and meet new people. Participating in a society offers a good way to relax and wind down from the academic rigours of Key Stage 5 and looks great on a personal statement or job application.

Sport

We strongly believe that Sixth Form life is more than just academic. We have a dedicated Sports committee run by our students and many sporting opportunities from: netball, basketball, football with teaching staff, badminton or table tennis. There is something for everyone.

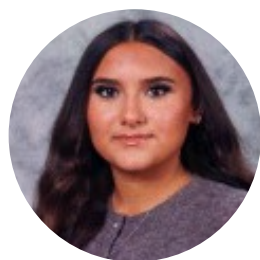
Each summer we participate in the Wellingborough Sixth Form Olympics.





A Day in The Life

A day in the life of a Sixth Form student is very different to the daily timetable of a Key Stage 4 student. Students should expect to complete five hours of independent study outside of their timetabled lessons



Emilia

Subjects Studied Maths, Chemistry, Biology, Politics

Form

During form times and lifeskills I enjoy having good debates as they help us explore lots of different important topics. I also find the Unifrog career booster sessions useful for exploring my career opportunities.

Outside of Lessons

I help with the Hatton Super League every Thursday after school which is a great way our year group has come together. I also help referee the netball each week for our younger students.



Maja

Subjects Studied Politics, RE, English Lit, German

Form

I have enjoyed completing the Unifrog career booster sessions. These help us identify our strengths and explore our career opportunities.

Outside of Lessons

I am undertaking an EPQ focusing on Ancient societies and traditions. Also, I have competed on behalf of the school in the English Speakers union debate competition where we competed against other local schools in the regional finals.



William

Subjects Studied Maths, Music, DT

Form

In our Year 13 form times we have focused on completing our UCAS applications with the help of our form tutor.

Outside of Lessons

I help with the tech and lighting for school events such as the Diwali disco. I also take part in county music opportunities. In my study periods I am allowed to use the range of music equipment we have here at Hatton.

Application Journey



Sixth Form Open Evening/ External Tours
Open Evening Thursday 13th November
Bookable external student/ parent tours

Sixth Form Introduction Assembly

YEAR
11

November

Application

Completion and submission of the Sixth form application form. The deadline for this is 17th December.

December

January

Academic Discussion 13th February -

Students have a meeting with Sixth form staff to discuss options.

Taster Day!
Opportunity for prospective students to participate in A-Level lessons of their choice

March

February

April

GCSE Exams

Enrolment

Formal registration and final subjects are selected. You can change subjects if you need to and you meet the entry requirements.

May / June

August

YEAR
12

20th August - GCSE Results Day

GCSE results day end of August. Post examination advice available. You can enrol on this day if they have the entry requirements.

welcome

Course Information

Minimum Requirements

The academy wide minimum entry requirement to be accepted into Hatton Sixth Form is five GCSE's at grades 9-4 including English (Language or Literature)* and Maths.

* Some subjects specify that the English grade must be in English Language.

A-Levels

A-Levels are Level 3 academic course. All A-Levels are assessed through terminal exams at the end of Year 13, although some may have an additional course work element.

BTEC

BTECs are Level 3 vocational courses. All BTECs are made up of four units; two are examination based and the other two involve coursework. Unlike A-Levels some of the exams may be taken in Year 12.

Option Blocks

You will need to select four different courses from the option blocks below.

Block A	Block B	Block C	Block D	Block E
Maths	Biology	Chemistry	Physics	Further Maths
Computer Science	Business Studies	Maths	English Lit/Lang	Geography
English Language	Politics	Sociology	Philosophy & Ethics	History
BTEC Sport	BTEC Business	BTEC IT	BTEC Health & Social Care	BTEC Applied Science
Drama	Product Design	Art	Spanish	Textiles
		Film Studies	German	Core Maths

Entry Requirements

	Subject	English	Maths	Other Requirements
A - Level	Biology	5	5	7 in Biology or 7-6 Combined Science
	Chemistry	5	6	7 in Chemistry or 7-6 Combined Science
	Computer Science	4	7**	6 in Computer Science ** if no Computer Science 7 in Maths
	English Lang Lit	6	4	6 in English Language or Literature
	English Literature	6	4	6 in English Language or Literature
	Further Maths	4	8	Must study A-Level Maths
	German	5	4	7 in German
	Maths	4	7	
	Physics	5	7	7 in Physics or 7-7
	Spanish	4	4	7 in Spanish
	Art, Craft, and Design	4	4	6 in Art/DT
	Business Studies	5/6	5/6	In English Language and Maths. either way around.
	Core Maths (AS only)	4	5	4 in Maths with Entry Test
	Drama & Theatre	5	4	6 in Drama
	Fashion & Textiles	4	6	6/Merit in Textiles, DT, or Art
	Film Studies	5	4	5 in Film Studies
	Geopgraphy	5	4	6 in Geography and 5 in any Science
	History	5	4	6 in History and 5 in any English
	Music	4	4	6 in Music/ D in BTEC Music Unit 4/5
	Philosophy and Ethics	6	4	6 in Humanities and 6 in any English
	Politics	6	4	6 in Humanities and 6 in any English
	Product Design	6	4	6 in GCSE DT
	Sociology	6	4	6 in Humanities and 6 in any English
BTEC	Business	5	5	
	Health and Social Care	5	4	M in Health and Social Care if studied. 4 in Science
	IT	5	4	% in English Language or Maths
	Sport	4	4	M in BTEC Sport Exam
	Applied Science	5	4	5-6 in Combined Science, or 6-5-5 in Triple



Subject Information A-Level

- Art, Craft & Design
- Biology
- Business Studies
- Chemistry
- Computer Science
- Core Maths AS
- Drama & Theatre
- English Lang/Lit
- English Literature
- Fashion & Textiles
- Film Studies
- Further Maths
- Geography
- German
- History
- Maths
- Music
- Philosophy & Ethics
- Physics
- Politics
- Product Design
- Sociology
- Spanish



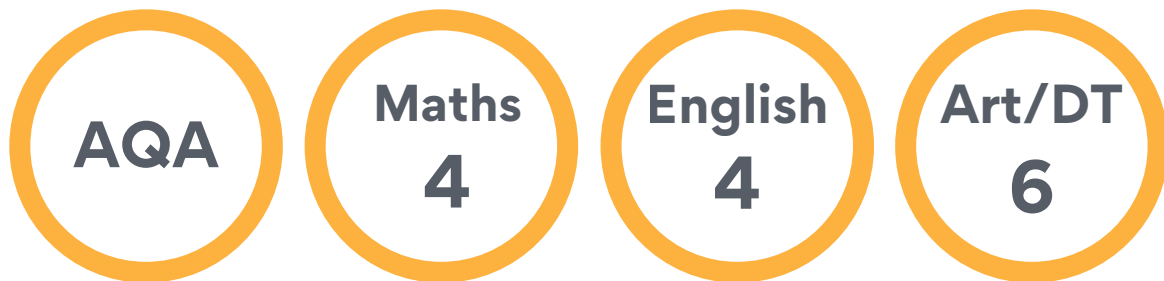


A Level Art, Craft, & Design

What will I learn?

You will learn about a wide range of historical and contemporary artists and you will select these appropriate to your chosen projects. You will explore a wide range of media and have the opportunity to refine your skills from drawing, painting, photography, printmaking, 3D work (wire, clay etc) and textiles. You will use your preferred range of media to develop your Personal Investigation and your NEA units and investigate artist's relevant to your themes. In NEA 1 you are expected to write a 3000 word extended written essay to support your practical NEA submission. Your ESA (NEA 2) is one single practical project following a theme given to you from the exam board.

What are the entry requirements?



How is the course assessed?

2x
NEA

Component 1: Personal Investigation (NEA 1) 60% - Easter 2024 (Year 12) - Jan 2025. Practical extended project and written essay.
Component 2: Externally Set Assignment (NEA 2) 40% Feb 2025 - May 2025. Practical project with 15 hours of supervised time to create a final outcome.

What are the future prospects?

Students have progressed to the following degree courses; Fine Art, Architecture, Printmaking and Theatre Design. Other courses that would follow this path range from Graphic design, film, photography, illustration, fashion and textiles, 3D design, animation and digital design.

Art and Design can lead to a wide range of careers such as Teaching, Childcare, Psychology, Business as well as creative industries such as film, media, marketing and design.

More Information?





A Level Biology

What will I learn?

Biology is the science of living organisms. In Year 12 you will build upon your knowledge of biological molecules and cells and develop an understanding of how these work together in a variety of living organisms. In Year 13 you will develop an understanding of processes that occur within living organisms, such as respiration, photosynthesis, and nervous coordination.

What are the entry requirements?

AQA

**Biology
7**

**Combined
Science
7-6**

**Maths
5**

**English
5**

How is the course assessed?

**3x
Exams**

Paper 1: 2hr Written Paper. 91 marks. Year 12 Content

Paper 2: 2hr Written Paper. 91 marks. Year 13 Content

Paper 3: 2hr Written Paper. 78 marks. This is a holistic paper, covering content from both years. The paper contains an essay.

What are the future prospects?

Biology is a key A-Level for those wishing to pursue a career in medicine, dentistry, and veterinary science.

Students can study aspects of Biology further such as zoology and microbiology.

The transferable skills gained would benefit anyone wanting to pursue accounting and business related careers too.

More Information?





A Level Business

What will I learn?

Business Studies looks at different types of organisations that exist in various business sectors and environments. You will study business problems, behaviour and strategy, and understand how management, leadership, and decision making can improve performance in marketing, operations, finance and people. You will study business concepts and theories and apply these to the real world, linking to the role of businesses in the economy.

What are the entry requirements?



How is the course assessed?

3x
Exams

Paper 1 - Multiple Choice Questions, Short Answer Questions and 2x 25 Mark Essays.
Paper 2 - 3 data response questions made up of 3 or 4 part questions.
Paper 3 - One case study followed by six questions.
Each 2 hour paper has equal weighting.

What are the future prospects?

A Level Business Studies will give you the skills and knowledge that you need to progress into higher education or apprenticeships. Business is a subject that is sought after by both universities and employers. there are many opportunities in a variety of organisations, including companies or management consultancies and apprenticeships ranging from finance to operations to marketing or human resources.

More Information?





A Level Chemistry

What will I learn?

Chemistry plays an active role in modern society. In Year 12, you will enhance your GCSE knowledge of atoms, acids, rates of reaction and the periodic table. You will be introduced to basic organic chemistry and reaction mechanisms. In Year 13, you will learn more complex chemistry including the transition elements and additional organic mechanisms.

What are the entry requirements?



How is the course assessed?

3x
Exams

Paper 1: Periodic Table, Elements and Physical Chemistry. 100 marks. Written Paper 2hr 15min.

Paper 2: Synthesis and Analytical Techniques. 100 marks. Written paper. 2hr 15min

Paper 3: Unified Chemistry. 70 marks. Written Paper. 1hr 30 mins.

What are the future prospects?

Chemistry is a key A Level for those wishing to pursue a career in medicine, dentistry, or veterinary science.

The transferable skills gained would benefit anyone wanting to pursue law, journalism, accounting, or other financial sectors.

More Information?





A Level Computer Science

What will I learn?

The course builds upon knowledge covered in GCSE, although it reintroduces most of the topics covered in GCSE at a greater depth in Year 12. You also get to learn a new programming language C# that you will use for the exam as well as the project in Year 13. In Year 13, more advanced and complex topics are taught such as object oriented programming, theory of computation, functional programming, and Big Data.

What are the entry requirements?



How is the course assessed?

2x
Exams

Paper 1: On-screen exam. 2hr 30 min. Programming skills and theory behind programming. (40%)
Paper 2: Written Exam. 2hr 30 min. Theory topics. (40%)
Non Examined Assessment (NEA) - Program a solution to a practical problem. (20%)

1x
NEA

What are the future prospects?

Students taking A Level Computer Science can apply for a university degree in Computer Science. It's worth noting that most Computer Science courses also require A Level Maths.

Students can pursue careers in software development, data science, IT and database administration. The transferable skills you learn include problem solving, analytical thinking and modelling.

More Information?



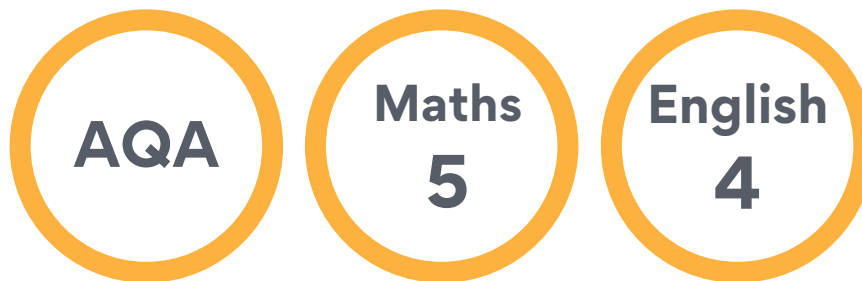


A Level Core Maths

What will I learn?

The AQA Level 3 Certificate in Mathematical Studies Course is designed to develop students' knowledge of mathematics in real life situations and their confidence in applying their knowledge to solve problems in a variety of situations. The Personal Finance section includes Tax, National Insurance and Savings and Loans. Data Handling includes various techniques in data analysis, much of which is useful in other A Level subjects. This is a one year course.

What are the entry requirements?



How is the course assessed?

2x
Exams

2 x 1hr 30min written exams at the end of Year 12
Paper 1 - Handling Data, Personal Finance, Estimation (60 marks)
Paper 2 - Critical Analysis, Normal Distribution, Confidence Intervals, Correlation & Regression (60 marks)

What are the future prospects?

It is recognised nationally that many people lack the mathematical knowledge and problem solving aptitude that many jobs and university courses require. This course has been designed to address this gap and is widely recognised by employers and universities. The government is planning for all students to continue to study Maths until the age of 18, and this course will form the basis for it.

More Information?





A Level Drama & Theatre Studies

What will I learn?

By devising original performance you will learn to communicate meaning to audiences. You will gain an understanding of how performance is developed through practical exploration of theatrical styles and conventions and develop theatre making skills, exploring how to realise artistic intentions in performance. You will analyse and evaluate how different theatre makers create impact through the study of set texts and live theatre performances at the theatre.

What are the entry requirements?

Edexcel

Maths
4

English
5

Drama
6

How is the course assessed?

1x
Exam

Component 1: Devising - the process of creating a play. Written portfolio and practical performance. 40%

Component 2: Performance in a group and monologue/duologue from scripts. 20%

Component 3: Theatre Makers in Practice. Set text and live theatre analysis. Written Paper 2hr 30min. 40%

What are the future prospects?

The transferable skills that employers desire are all enhanced by the study of Drama and Theatre. You could pursue a career in the Performing or Creative Arts, but imagine how the confidence, communication, teamwork, project management, empathy and problem solving skills contribute to careers such as Advertising, Marketing, Law, and Medicine just as much. There are no limits.

More Information?





A Level English Language & Literature

What will I learn?

You will study a wide range of texts, from the fields of prose, drama, and non-fiction, from a broad range of time periods. You will compare *The Great Gatsby* by F. Scott Fitzgerald, and *A Raisin in the Sun* by Lorraine Hansberry; you will explore the play *All My Sons* by Arthur Miller as a standalone text; and you will analyse a non-fiction and spoken language anthology. For coursework, you will write two creative pieces, one fictional, one non-fiction, and write a commentary about your process.

What are the entry requirements?

Edexcel

English
Language
6

English
Literature
6

Maths
4

How is the course assessed?

2x
Exams

Paper 1: Voices in Speech and Writing - 2hr 30min. 50 marks. (40%)
Paper 2: Varieties in Language and Literature. 2hr 30 min. 50 marks. (40%)
Non Examined Assessment (NEA) - produced independently. 60 marks, (20%)

1x
NEA

What are the future prospects?

Publishing
Journalism
Law
Politics
Education
Marketing and Advertising
Philosophy
Creative Industries

More Information?





A Level English Literature

What will I learn?

You will study a wide range of texts, from the fields of prose, drama, and non-fiction, from a broad range of time periods. With novels, you will study *Beloved* by Toni Morrison and *The Picture of Dorian Gray* by Oscar Wilde; with drama, you will study *Hamlet* by William Shakespeare, and *Doctor Faustus* by Christopher Marlowe; and with poetry, you will study an anthology of Post-2000 Poetry and the poetry of the Modernists. You will also write a 3000 word essay for coursework on two texts of your choice.

What are the entry requirements?

Edexcel

English
Language
6

English
Literature
6

Maths
4

How is the course assessed?

3x
Exams

Paper 1: Drama - 2hr 15min. 60 marks. (30%)

Paper 2: Prose - 1hr 15min. 40 marks. (20%)

Paper 3: Poetry - 2hr 15min. 60 marks (30%)

Non Examined Assessment (NEA) - produced independently.
60 marks, (20%)

1x
NEA

What are the future prospects?

Publishing
Journalism
Law
Politics
Education
Marketing and Advertising
Philosophy
Creative Industries

More Information?



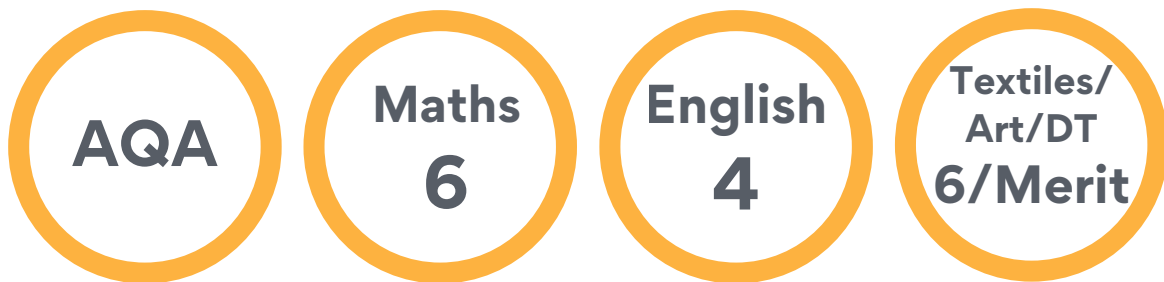


A Level Fashion & Textiles

What will I learn?

This creative and exciting course gives you the opportunity to develop your design skills and gain an in-depth technical understanding of core principles relating to the fashion and textile industry. During this course you will explore a wide range of specialist techniques including garment manufacture, trend forecasting, printing, weaving, embroidery, pattern drafting and adaptation and much more. You will investigate the historical, social, cultural, environmental and economic influences on design through a combination of creative, practical investigation and seminar style lessons. In Year 13, you will embark on an NEA project. The theme of this substantial design and make project is selected by students and allows you to fully explore areas of personal interest.

What are the entry requirements?



How is the course assessed?

2x Exams	Paper 1: Technical Principles, 2hr 30min written. 30%	1x NEA
	Paper 2: Designing and Making Principles, 1hr 30min written. 20%	
	NEA: Personal sustained design and make project. 50%	

What are the future prospects?

This course gives students the practical skills, theoretical knowledge and confidence to succeed in a number of careers, especially those in creative industries. This could include Fashion or Textile Design, Textile Technology, Pattern Cutting, Costume Design, Fashion Marketing and communication and many more. It also develops many transferable skills such as creative thinking, problem solving, and time management.

More Information?





A Level Film Studies

What will I learn?

Film Studies gives you the opportunity to watch and analyse a wide range of films from a breadth of different social, political, and cultural contexts. The course teaches you to understand and appreciate the aesthetics of film and power of film as a vehicle for social comment.

What are the entry requirements?

WJEC

Maths
4

English
5

Film
5
if studied

How is the course assessed?

2x

Exams

Component One: Varieties of Film and Filmmaking. Written Exam - 2hr 30min. 35%

Component Two: Global Filmmaking Perspectives. Written Exam - 2hr 30min. 35%

Component Three: Film Production NEA - 30%

1x

NEA

What are the future prospects?

This subject lays the foundation for further study of Film, Media or related subjects in higher education.

Studying Film Studies at the A Level can lead to a range of careers in the film and entertainment industry, including film production roles like directing, producing, and editing, as well as screenwriting, film criticism, festival management and post production.

More Information?





A Level Further Maths

What will I learn?

If you enjoy maths, it is worth considering taking Further Maths at A Level. Although this is an entire A Level in its own right, it can only be studied in addition to A Level Maths, as it extends many of the concepts contained within that course. Students will improve their understanding of fundamental concepts, which will be essential if they go on to study the subject at university. Modules include Core Pure 1, Core Pure 2, Further Statistics and Further Mechanics.

What are the entry requirements?

Edexcel

**Maths
6**

**English
4**

Must be
taken with
Maths

How is the course assessed?

**4x
Exams**

Paper 1: Core Pure Maths. 75 marks. (1hr 30min)

Paper 2: Core Pure Maths. 75 marks. (1hr 30min)

Paper 3: Applied Maths Option - Further Statistics. 75 marks.
(1hr 30min)

Paper 4: Applied Maths Option - Further Mechanics. 75 marks.
(1hr 30min)

What are the future prospects?

The subject is very demanding but is potentially very satisfying. Further Maths A Level is often desirable and sometimes required for degrees in Computing, Engineering, Physics and of course Mathematics. Career prospects are many and varied including research, finance, accounting and engineering.

More Information?





A Level Geography

What will I learn?

The world we live in is changing. Geography allows you to see why and how it is changing. It can enhance communication skills, literacy, and numeracy, IT literacy, spatial awareness, team working, problem solving and environmental awareness. You will study a wide range of global issues both in the classroom and through fieldwork. Geography is an interesting and popular subject at A Level.

What are the entry requirements?



How is the course assessed?

3x Exams	Exam Board: OCR	1x NEA
	Paper 1: Physical systems; 1hr 30min. 66 marks. 22%	
	Paper 2: Human Interaction; 1hr 30min. 66 marks. 22%	
	Paper 3: Geographical Debates; 2hr 30min. 108 marks. 36%	
	NEA: Independent Investigation, 60 marks 20%. The average cost of the trip is £180-£200	

What are the future prospects?

- Geography can open doors.
- Further Education - Geographers can go on to study higher level courses
- Employment - Geographers can go into a wide range of jobs including: Advertising, Education, Marketing, Finance, Law and Retailing, Town and Country Planning, Sustainable Technologies and energy among many other areas.

More Information?





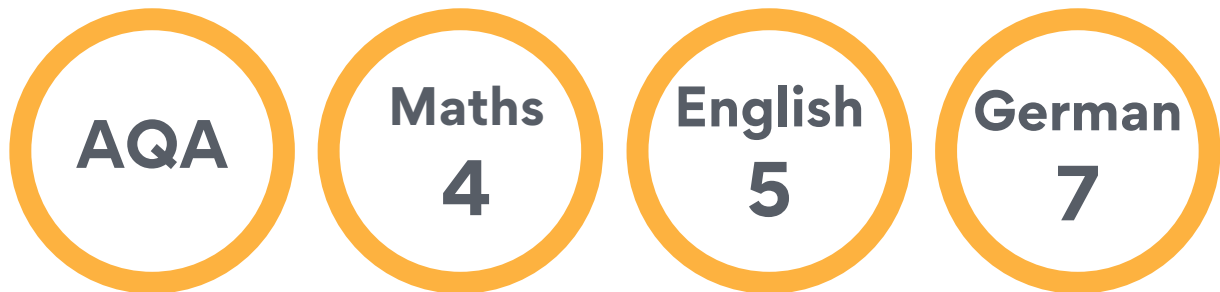
A Level German

What will I learn?

German A Level is not just for linguists - There is a lot of transfer to your other subjects. In Y12 you will learn about and to critical opinions the topics of aspects of German-speaking society

such as art, family and culture. Y13 focusses on multiculturalism and aspects of political life in the German-speaking world. Furthermore in Y13 an independent research project and the method of study encourages independent learning which will prepare you for degree style learning.

What are the entry requirements?



How is the course assessed?

3x
Exams

Paper 1: Reading, Listening, and Translation. Written Exam 2hr 30min. 100 marks

Paper 2: Analysis of a chosen book and film. Written Exam. 2hr. 80 marks.

Paper 3: Oral Exam: 21-23 minutes (including 5 min preparation time) 60 marks.

What are the future prospects?

Alongside a degrees in linguistic, German can be combined with many subjects at degree level and is the most widely used mother tongue in the EU. Furthermore German is the second most common language in Science and a big contributor to research ad developments offering scholarships to scientists from abroad. Knowledge of German increases your job opportunities with German and foreign companies in your own country and abroad.

More Information?





A Level History

What will I learn?

Our History A Level students not only learn deeper source analysis and essay writing skills, from how to research effectively and how to argue their opinion, but throughout the course we also teach them some of the skills for university and the working world, from how to do formal presentations to pitching research. The two AQA topics we offer are The Making of Modern Britain 1945-2010 and Tsarist and Communist Russia 1854-1964. Both topics are new to students and have specialist staff.

What are the entry requirements?



How is the course assessed?

2x
Exams

40% Making of Modern Britain Exam. 3 Essays. (2hr 30 mins)
40% Tsarist and Communist Russia 1854-1964
20% NEA internally and externally moderated.

1x
NEA

What are the future prospects?

History is a key subject for those wanting to pursue a university degree and/or career in Law, Politics, Journalism, Writing, Business, Archaeology, and Internal Affairs. We promote History itself at university or as a joint honours before pursuing career paths to help further develop the skills of research, writing, speaking and debating.

More Information?



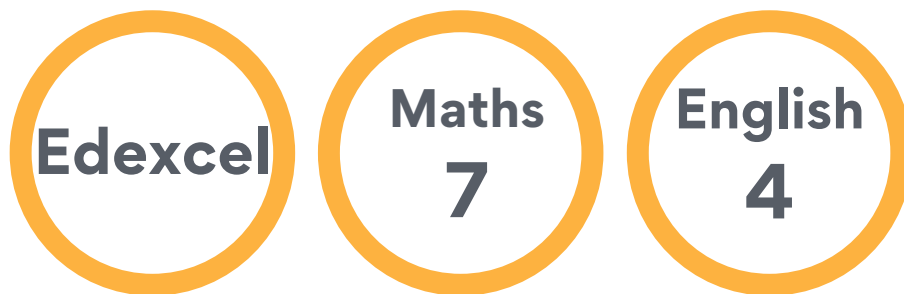


A Level Maths

What will I learn?

Studying A Level Maths will teach you to think logically, process information accurately and to understand and manipulate numbers and mathematical processes. In Year 12 you will learn about calculus, statistical distributions, and mechanical models. In Year 13, you will learn topics in more depth, including trigonometry, differential equations, hypothesis testing and projectiles.

What are the entry requirements?



How is the course assessed?

3x
Exams

Paper 1: Pure Maths. 100 marks. (2hr)
Paper 2: Pure Maths. 100 marks. (2hr)
Paper 3: Applied Maths (Statistics and Mechanics). 100 marks. (2hr)

What are the future prospects?

Mathematics A Level is one of the most useful subjects for university entry. Many degree courses may not require specific A Level subjects, but, of those that do, Mathematics is by far the most commonly required.

The skills of analysis and logic you gain will be invaluable in many careers including finance, accounting, engineering, IT, and of course teaching.

More Information?





A Level Music

What will I learn?

Within the two year course you will be developing your composition, performance and analysis skills from your GCSE Music qualification further. Covering six areas of study: Western Classical, Rock and Pop, Musical Theatre, Jazz, 20th Century and 21st Century Music. There is an option to focus on either composition or performance as a specialism throughout the course.

What are the entry requirements?



How is the course assessed?

1x
Exam

Component 1: Performance- Option A 35%, Option B 25%
(Coursework - NEA)
Component 2: Composition - Option A 25%, Option B 35%
(Coursework - NEA)
Component 3: Appraising - 2hr 25min Exam - 40%

2x
NEA

What are the future prospects?

Students completing an A Level Music Course often progress to follow their music studies further, whether at college or university. Employers and universities often consider the dedication and commitment of studying music to A Level as an indicator of work ethic and dedication.

More Information?





A Level Philosophy & Ethics

What will I learn?

During this course you will explore Philosophy and Ethics as well as the Development of Christian Thought. In Philosophy, you will look at topics such as Mind, Body and Soul, Religious Language, and the Problem of Evil. In Ethics, you will study normative ethical theories and their application in, for example, business ethics and in the development of Christian thought you will look at topics such as Gender and Theology, Secularisation and Knowledge of God's Existence. Throughout the course you will critically examine and evaluate scholarly views from the Ancients, such as Aristotle and Plato, through no more modern academics such as Dawkins, Swinburne and Hick.

What are the entry requirements?



How is the course assessed?

3x
Exams

There are 3 exams at the end of Year 13. One for each component, each worth 33.3%
Philosophy, Ethics, and Development of Christian Thought
each exam requires three 40 mark essays. The mark scheme prioritises evaluation with 60% of the marks available being for AO2.

What are the future prospects?

This course is excellent for those seeking careers in the following areas:
English Literature and Language, Law, Medicine, Journalism, Civil Service, HR, Business, Philosophy, History, Social Work, Education, Health Care, Psychology, Theology, Sociology, and Criminology.

More Information?





A Level Physics

What will I learn?

We follow the AQA Specification. Much of the content is delivered using practical demonstrations and investigations. Our aim is to inspire students to develop their curiosity about how the universe works and to give them the skills to explore and problem solve. The topics taught are: particles and radiation, waves, mechanics and materials, electricity, further mechanics, thermal physics, fields, nuclear physics, plus an option topic which we select.

What are the entry requirements?



How is the course assessed?

3x
Exams

Three papers, 2 hours each.
Papers 1 and 2 are split by topics, almost matching the topics of Years 1 and 2 respectively.
paper 3 examines the practical skills and has the option topic within it.

What are the future prospects?

Students with qualifications in physics often go on to study a science or engineering degree which lead on to careers in research in academia or industry, most commonly in aerospace, meteorology, nanotechnology and computing. Physics students may also progress onto careers in government or finance - places where problem solving abilities and analytical skills are great assets.

More Information?





A Level Politics

What will I learn?

In Year 12, you will look at how democracy and the political system works in the UK and USA, as well as the type of political parties and the reasons people vote for certain parties. You will also gain an understanding of some key ideological ideologies.

In Year 13, There is more of a focus on the workings of the governments of the UK and USA, as well as the legislative processes and the judicial systems of both countries.

What are the entry requirements?

Edexcel

Maths
4

English
Language
6

Humanities
6
(not
geography)

How is the course assessed?

3x

Exams

Paper 1: UK Politics and Core Ideologies. 2hrs. 84 marks. 33%

Paper 2: UK Government and Non-Core Ideology. 2hrs. 84 marks. 33%

Paper 3: US Politics and Government and comparative studies. 2hrs. 33%

What are the future prospects?

You could progress from this qualification to university courses that relate directly to government and politics. University courses that will benefit from the skills acquired from this subject include law, economics, or philosophy. Employment where analytical skills are essential, for example, management, finance, government, industry and business environments.

More Information?





A Level Product Design

What will I learn?

The specification requires students to cover design and technology skills and knowledge through technical principles, and designing and making principles.

Students develop the ability to apply skills and knowledge from other subject areas to inform their decisions in design and application of technology. In Year 12, students will cover manufacturing processes, performance of materials and their applications through workshop activities to build confidence and competence. Students will use traditional workshop hand tools, Computer Aided Design and Manufacture to prepare design proposals later in the course. In Year 13 students will undertake an independent design project (NEA), culminating in a final portfolio demonstrating their design thinking and problem-solving skills along with the final prototype.

What are the entry requirements?

AQA

**Maths
4**

**English
6**

**DT
6**

How is the course assessed?

**2x
Exams**

Paper 1: Technical Principles. Written Exam. 30%
Paper 2: Designing and Making Principles. Written Exam. 20%
NEA: Design and Make Project. Practical application of technical and designing and making principles. Design portfolio and practical outcome. 50%

**1x
NEA**

What are the future prospects?

Product design students progress on to study various practical and creative subjects which lead them into career pathways including Product Design, Mechanical Engineering, Product Design Engineering, Automotive engineering and design, Furniture Design, Architecture, Civil Engineering, Materials Engineer and Computer Aided Design Software Engineer.

More Information?





A Level Sociology

What will I learn?

Within Sociology, you will consider the role of social structures on human behaviour within a global society. We focus on the development of the education system and on the formation of culture and identity; particularly examining the importance of symbols and language. Additionally in Year 12, you will explore the factors that influence News selection and control of media organisations alongside the impact of Media on different social groups. Finally, we will explore a sociological understanding of criminal behaviour both in the UK and around the world.

What are the entry requirements?



How is the course assessed?

3x
Exams

Paper 1: Education with Theory and Methods. 2hrs. 80 marks. 33%
Paper 2: Topics in Sociology. 2hrs. 80 marks. 33%
Paper 3: Crime and Deviance with Theory and Methods. 2hrs. 80 marks. 33%

What are the future prospects?

Sociology is a great choice of subject for people who want a career in social work, nursing, or medicine. The subject is also useful in a number of other careers like marketing, advertising, PR, journalism, law, or teaching.

Sociology, Psychology, English, Business, and Law.

More Information?



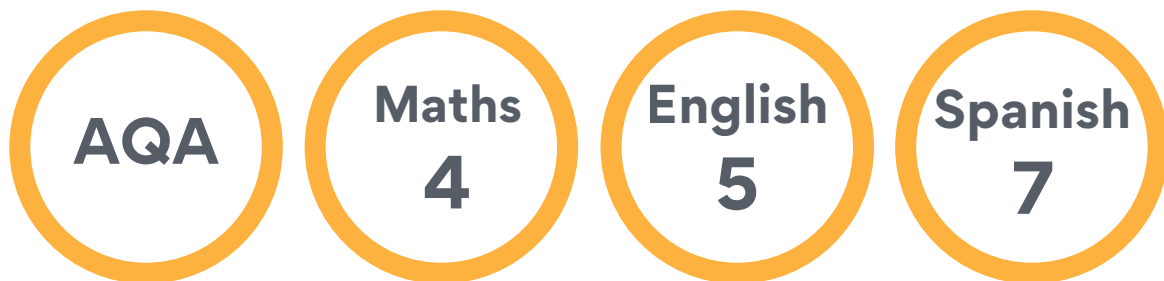


A Level Spanish

What will I learn?

Spanish A Level is not just for linguists - There is a lot of transfer to your other subjects. In Y12 you will learn about and to critical opinions the topics of aspects of Spanish-speaking society such as art, family and culture. Y13 focusses on multiculturalism and aspects of political life in the Spanish-speaking world. Furthermore in Y13 an independent research project and the method of study encourages independent learning which will prepare you for degree style learning.

What are the entry requirements?



How is the course assessed?

3x Exams

Paper 1: Reading, Listening and Translation. Written Exam 2hr 30min. 100 marks

Paper 2: Analysis of a chosen book and film. Written Exam. 2hr. 80 marks.

Paper 3: Oral Exam. 21-23 minutes (including 5 min preparation time) 60 marks.

What are the future prospects?

Alongside a degrees in linguistics, Spanish can be combined with many subjects at degree level. Furthermore Spanish is the third most spoken language worldwide. Knowledge of Spanish increases your job opportunities with Spanish speaking and foreign companies in your own country and abroad.

More Information?





Subject Information BTEC

- BTEC Business
- AAQ BTEC Health & Social Care
- BTEC IT
- BTEC Sport
- BTEC Applied Science



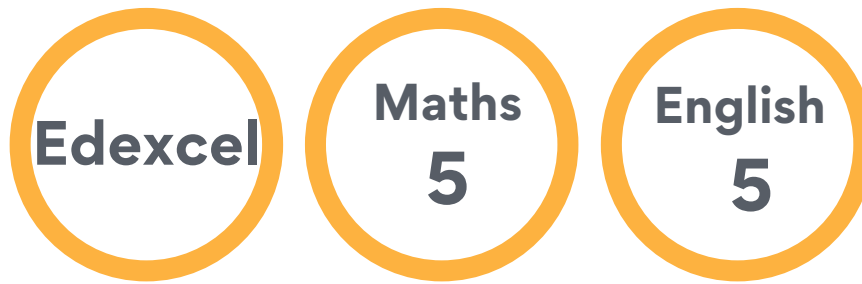


BTEC Level 3 Business

What will I learn?

Students will perform vocational tasks that encourage the development of transferable skills such as communication, teamwork, research and analysis. The course provides the opportunity to learn independently; the ability to research actively and methodically and the ability to give presentations and be active group members. This will give you a greater understanding of the business world and how stakeholders are influenced by the world around them.

What are the entry requirements?



How is the course assessed?

2x
Exams

Unit 1: Exploring Businesses (coursework) 25%
Unit 2: Developing a Marketing Campaign (3hr Exam) 25%
Unit 3: Personal and Business Finance (2hr Exam) 33%
Unit 8: recruitment and Selection (coursework) 17%

2x
**Course
work**

What are the future prospects?

This course is particularly relevant for those students who wish to enter, or have a strong interest in business fields that include human resource management, business planning, finance and marketing. It can also be used to apply for business related degrees at university.

More Information?





AAQ BTEC Level 3 Health & Social Care

What will I learn?

This is a 2 year course in which you will develop a detailed understanding of: effective communication, equality, diversity, human growth, and development, through the life stages, prevention, and treatment options. You will also learn about Anatomy and physiology and disorders of the body, the effect of these on body systems, microbiology relevant to health science, the role of microorganisms in human health, development of diseases and infections and impact of diseases and their treatment in a global context. You will learn by completing projects and assignments that are based on realistic workplace situation, activities and demands.

What are the entry requirements?



How is the course assessed?

2x Exams

- Unit 1: Human Lifespan and Development
- Unit 2: Human Biology and Health
- Unit 3: Principles of Health and Social Care Practice
- Unit 7: Health Science

2x Coursework

What are the future prospects?

Students who complete this course often have a strong interest in health and social care fields including; nursing, midwifery, nursery work, social work, and allied professions such as the police or the probation service.

Students also apply for degrees at university such as nursing and social work.

More Information?





BTEC Level 3 IT

What will I learn?

This is a two year vocational course where you will learn how to use different IT systems in a business. In Year 12 , you will create a social media campaign for a real business and learn how to use a database to store data. Then, in year 13, you will create a website for a business as well as learn more about how computers work and how IT systems can be kept secure.

What are the entry requirements?



How is the course assessed?

2x
Exams

Unit 1: Exam. information Technology Systems. 33%
Unit 2: Exam. Creating Systems to Manage Information. 25%
Unit 3: Coursework. Using Social Media in Business. 25%
Unit 6: Coursework. Website Development. 17%

2x
**Course
work**

What are the future prospects?

Students taking BTEC Level 3 in IT can apply for a university degree in IT related fields, such as games development, marketing, media, and computer science. They can also choose to do a degree apprenticeship in a technology company.

Students can pursue careers in IT support, database administration, cyber security as well as many others.

More Information?





BTEC Level 3 Extended Certificate in Sport

What will I learn?

This is a two year course in which you will develop a detailed understanding in; Anatomy and Physiology, Fitness Programming, various careers in sport and fitness testing. You will complete some assignments which are based on a variety of scenarios and which demand some role play and physical activity.

What are the entry requirements?

Edexcel

**Maths
4**

**English
4**

if studied
**Sport
Merit**

How is the course assessed?

**2x
Exams**

You will sit two internally assessed exams:
Anatomy and Physiology - 1hr 30min exam
Fitness Profiling - 3hr controlled assessment
You will complete two coursework units on Professional Development in Sport and Fitness Testing in Sport,

**2x
Course
work**

What are the future prospects?

The course offers a plethora of opportunities in further education and is widely recognised as currency by the vast majority of Universities as entrance into a wide range of their undergraduate courses, examples being Physiotherapy, Sport Management, and Sport Psychology.

More Information?





AAQ BTEC Level 3 in Applied Science

What will I learn?

In Applied Science, you will develop your knowledge and practical skills learnt at GCSE across all three disciplines of Science. Year 12 will focus on developing your knowledge of key concepts of Biology, Chemistry and Physics. Year 13 will focus on developing practical skills by investigating the key experiments linked to Year 12 content. You will undertake a scientific research project, including conducting a literature review, planning an investigation and then presenting your conclusions of your investigative work.

What are the entry requirements?



How is the course assessed?

**3x
Exams**

Unit 1 – Principles & applications of Biology – Examination
Unit 2 – Principles & applications of Chemistry – Examination
Unit 3 – Principles & applications of Physics – Examination
Unit 4 – Practical Scientific Procedures & Techniques – NEA Assessment
Unit 5 – Scientific Investigative Skills – Internal NEA Assessment

**2x
Course
work**

What are the future prospects?

Applied science can lead to a wide range of career paths including technical roles and managerial positions. Some career pathways from the completion of this course include medicine and engineering.

More Information?





Sir Christopher Hatton Academy
Sixth Form

“Our Sixth Form combines academic excellence with exceptional pastoral care. We want every student to feel valued and confident to pursue their ambitions.”

Mrs A Williams
Director of Sixth Form

